

Estate Agents



Auctioneers



Kimberley Road, Southbourne, Bournemouth, BH6 5DF Guide Price £190,000 Leasehold

One Bedroom First Floor Flat | Private Entrance, Hallway and Study Area
Stairs To First Floor Landing | Reception Room | Modern Kitchen | Double Bedroom
Bathroom | Front Garden/Driveway | Leasehold

Kimberley Road, Southbourne, Bournemouth, BH6 5DF

Guide Price £190,000 Leasehold

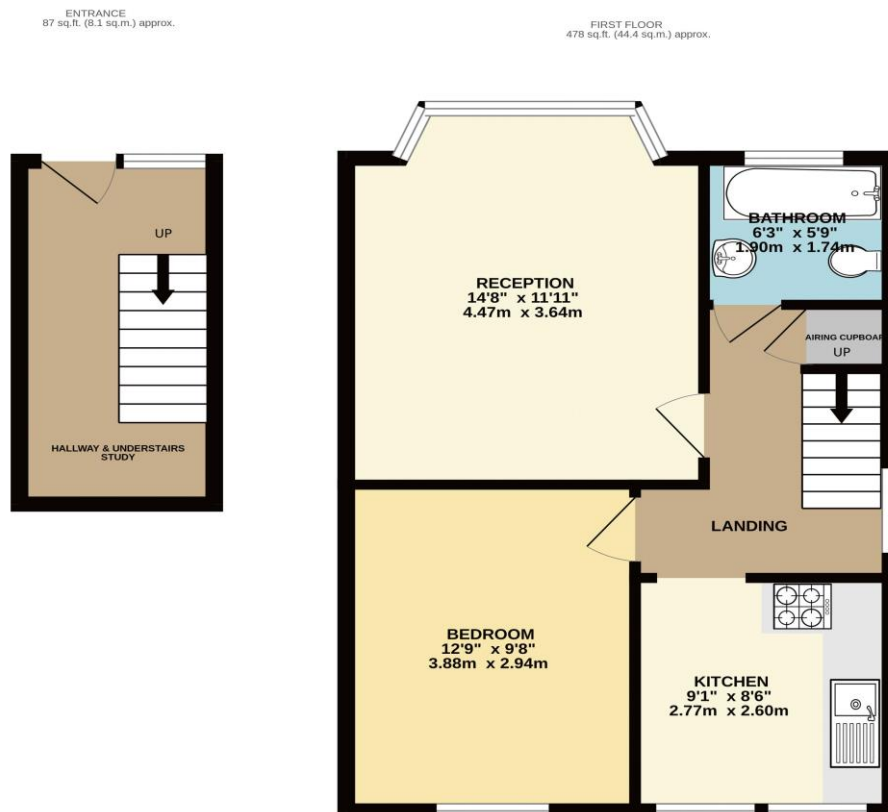
A well presented one bedroom first floor flat situated in a quiet location in the heart of Southbourne. Southbourne Grove with its cosmopolitan array of local shops, bars and restaurants is half a mile away, with the clifftops with sandy beaches just beyond; bus services and Pokesdown Train station are also nearby. The property features UPVC double glazing, gas central heating, ground floor office/study area, 15' reception room with bay window, bright double bedroom, modern kitchen with built in oven & hob and a bathroom with three piece bathroom suite. Access to loft from landing.

Enter via the private front door into the hallway; there is a useful understairs study area and stairs leading to the first floor landing which has access to the loft space, cupboard space and doors to all rooms. The 15' reception room has a bay window to the front aspect; there is a modern kitchen to the rear which has a good range of wall and base units incorporating a built-in oven & hob, space for other appliances and a small table and chairs. There is a good sized double bedroom which has a window to the rear, and a bathroom with white three piece suite of bath with shower, w/c and basin with white tiling.

Outside, to the front of the property is a tarmac area which could accommodate a small car if desired.

Tenure: Leasehold
Council Tax Band: A

Maintenance: As and when required



TOTAL FLOOR AREA : 565 sq.ft. (52.5 sq.m.) approx.
Whilst every attempt has been made to ensure the accuracy of the floorplan contained here, measurements of doors, windows, rooms and any other items are approximate and no responsibility is taken for any error, omission or mis-statement. This plan is for illustrative purposes only and should be used as such by any prospective purchaser. The services, systems and appliances shown have not been tested and no guarantee as to their operability or efficiency can be given.
Made with Metroplan ©2024

These particulars, whilst believed to be accurate are set out as a general outline only for guidance and do not constitute any part of an offer or contract. Intending purchasers should not rely on them as statements of representation of fact, but must satisfy themselves by inspection or otherwise as to their accuracy. We have not carried out a detailed survey nor tested the services, appliances and specific fittings. Room sizes should not be relied upon for carpets and furnishings. The measurements given are approximate. No person in this firm's employment has the authority to make or give any representation or warranty in respect of the property.